

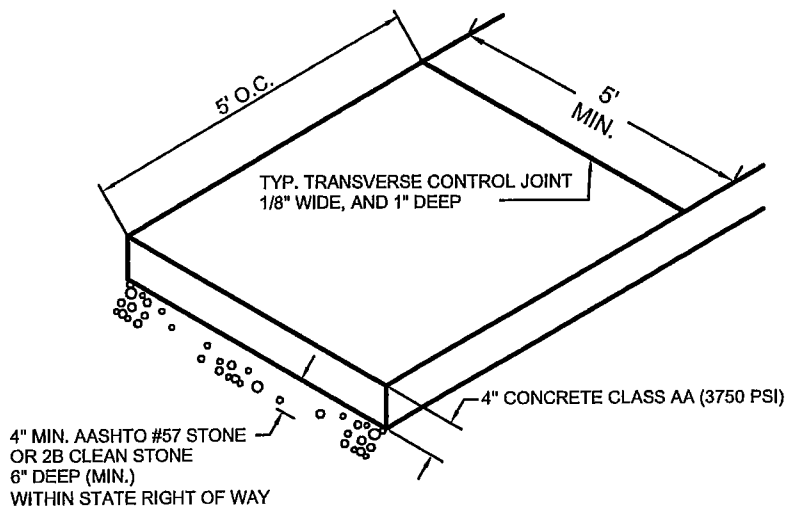
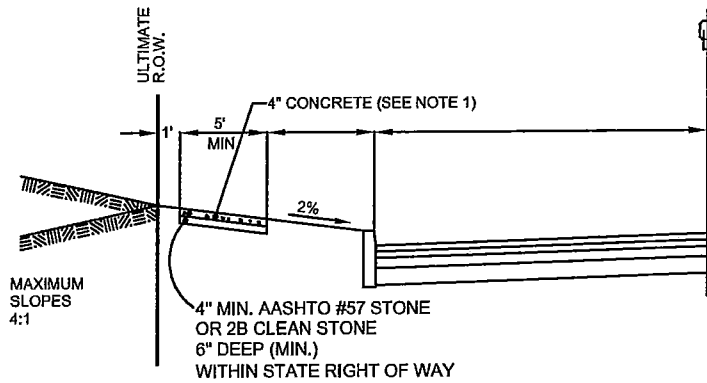
UPPER DUBLIN TOWNSHIP  
PUBLIC WORKS DEPARTMENT

Standards for Replacement Curbs,  
Sidewalks, and Drive Aprons

The following requirements and written details will supplement the current edition of the Upper Dublin Township Engineering and Construction Standards. These requirements are intended to clarify any technical construction practices unique to replacement work and not covered by development and PennDOT procedures.

- 1) All subgrade in sidewalk, apron, and curb areas will be inspected for suitability, and compacted with vibratory or pneumatic equipment. Upon acceptance by the Township inspector for depth and suitability, base stone will be leveled and compacted.
- 2) All tie-in locations for replacement work will be cut full depth, with adequate joint material sufficient to the installation depth. Joint material is subject to pre-approval by inspector.
- 3) Replacement concrete flatwork or curb which has sunken over utility connections will have sufficient subgrade compaction and have reinforcing placed as shown in detail #2.
- 4) All flatwork will be raked-off and hand- or mechanical-screeded between forms, in accordance with good construction practice (see sidewalk detail). Ballfloats or long trowels will not be considered acceptable alternates. Variations in new flatwork of more than 1/8" in 1 foot will be considered unacceptable, and require removal and reinstallation.
- 5) Wooden forms for sidewalks and drive aprons will be considered acceptable only if constructed of full-dimensional (1 1/2" minimum) straight finished lumber. Only steel forms in good condition, as specified in the Standards, shall be used for curb work.
- 6) Only materials utilized for work in progress, or scheduled for the next day, shall be stored in the road. Locations are subject to approval of the site inspector, and will require lighted barricades overnight.
- 7) All excavations are to be barricaded with lights as required.

SIDEWALK DETAIL



NOTES:

1. PROVIDE MATERIALS AND CONSTRUCTION IN ACCORDANCE WITH THE REQUIREMENTS OF PENNDOT PUBLICATION 408, CURRENT EDITION, AND AS MODIFIED HEREIN.
2. CONCRETE SHALL BE CLASS AA (3750 PSI), AIR ENTRAINED (6%) WITH A 4" SLUMP MAX.
3. TRANSVERSE CONTROL JOINTS 1/8" WIDE AND 1" DEEP TO BE FORMED EVERY 5 FEET.
4. EXPANSION JOINTS WITH 1/2" PRE-MOLDED MATERIAL SHALL BE PLACED EVERY 30 FEET TO FULL DEPTH.
5. ALL EDGES TO BE ROUNDED WITH A 1/4" TOOL.
6. LIGHT BROOM FINISH TO BE APPLIED.
7. WEATHER PROTECTION SHALL BE USED IN ACCORDANCE WITH PENNDOT PUBLICATION 408 CURRENT EDITION.
8. PENETRATING SEALER TO BE APPLIED IMMEDIATELY FOLLOWING FINISHING OPERATIONS. PENETRATING SEALER TO BE AQUORON CPT2000 OR APPROVED EQUAL.

UPPER DUBLIN TOWNSHIP STANDARD DETAIL  
PROPOSED SIDEWALK



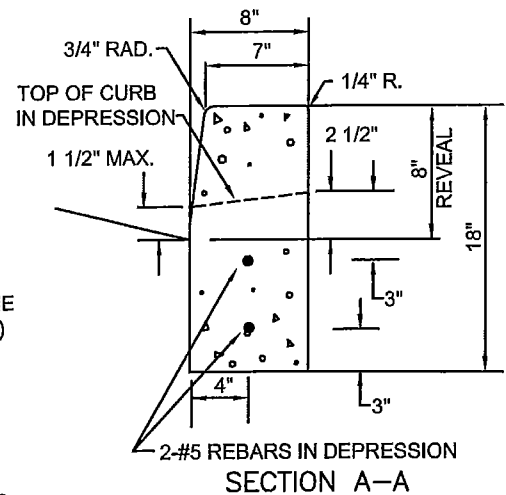
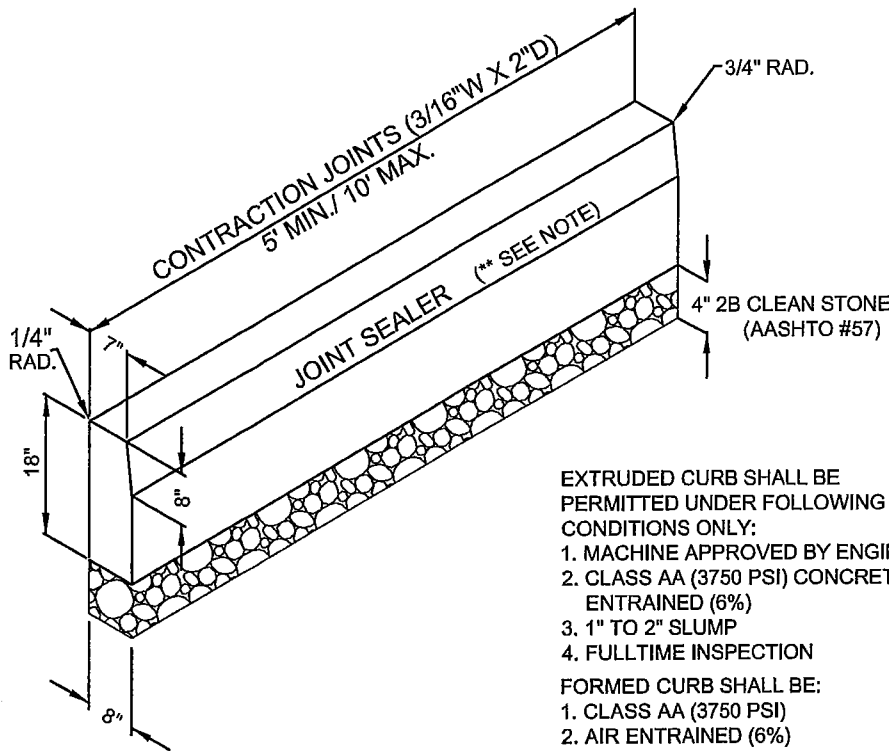
DATE

10-2013

NOT TO SCALE

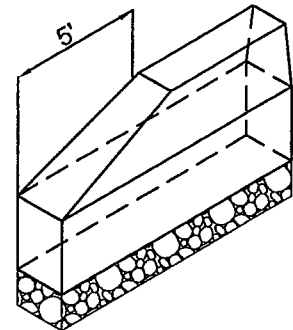
CC200

**CONCRETE CURB DETAIL**

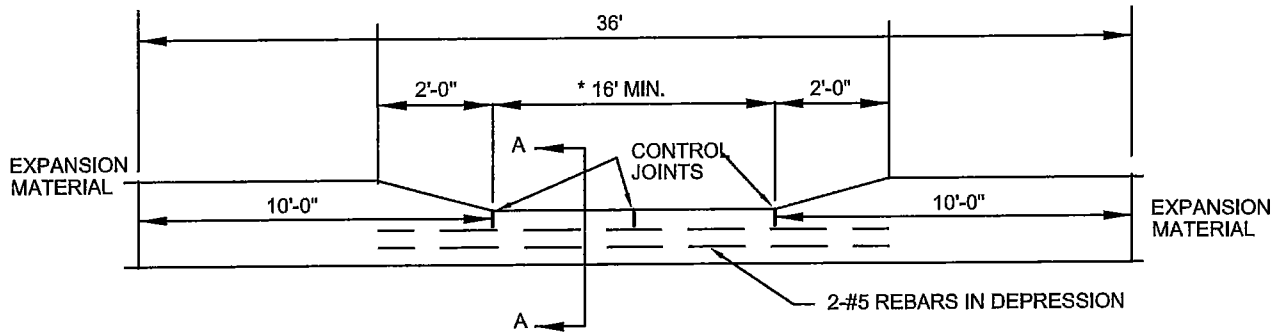


- EXTRUDED CURB SHALL BE PERMITTED UNDER FOLLOWING CONDITIONS ONLY:
1. MACHINE APPROVED BY ENGINEER
  2. CLASS AA (3750 PSI) CONCRETE AIR ENTRAINED (6%)
  3. 1" TO 2" SLUMP
  4. FULLTIME INSPECTION
- FORMED CURB SHALL BE:
1. CLASS AA (3750 PSI)
  2. AIR ENTRAINED (6%)
  3. 4" SLUMP

\*\* SEAL CURBLINE AFTER WEARING COURSE PLACEMENT WITH RUBBERIZED JOINT SEALING MATERIAL TYPE 4(C) AS MANUFACTURED BY CRAFTCO, INC. OR APPROVED EQUAL. 2" VERTICALLY UP FACE OF CURB, 12" HORIZONTALLY OUT FROM FACE OF CURB.



END OF CURB TAPER



\* 16' FOR 10' WIDE DRIVEWAY. FOR WIDER DRIVEWAYS ADD 6' TO THE DRIVE WIDTH.

**NOTES:**

1. PROVIDE MATERIALS AND CONSTRUCTION IN ACCORDANCE WITH THE REQUIREMENTS OF PENNDOT PUBLICATION 408, CURRENT EDITION, AND AS MODIFIED HEREIN.
2. 3/4" PREMOLDED EXPANSION JOINT MATERIAL SHALL BE PLACED AT 30 FOOT MAXIMUM SPACING TO FULL DEPTH OF CURB. (40 FOOT MAXIMUM FOR EXTRUDED CURB), AT STRUCTURES AND AT THE END OF A DAYS WORK.
3. CURB SHALL BE DOWEL PINNED INTO INLETS. 2-#8X1'-0" DOWEL BARS ON BOTH SIDES OF INLET.
4. 4" 2B CLEAN STONE UNDER CURB.
5. WEATHER PROTECTION SHALL BE USED IN ACCORDANCE WITH PENNDOT PUBLICATION 408, CURRENT EDITION.
6. PENETRATING SEALER TO BE APPLIED IMMEDIATELY FOLLOWING FINISHING OPERATIONS. PENETRATING SEALER TO BE AQURON CPT2000 OR APPROVED EQUAL.

**UPPER DUBLIN TOWNSHIP STANDARD DETAIL  
CONCRETE CURB DETAIL**



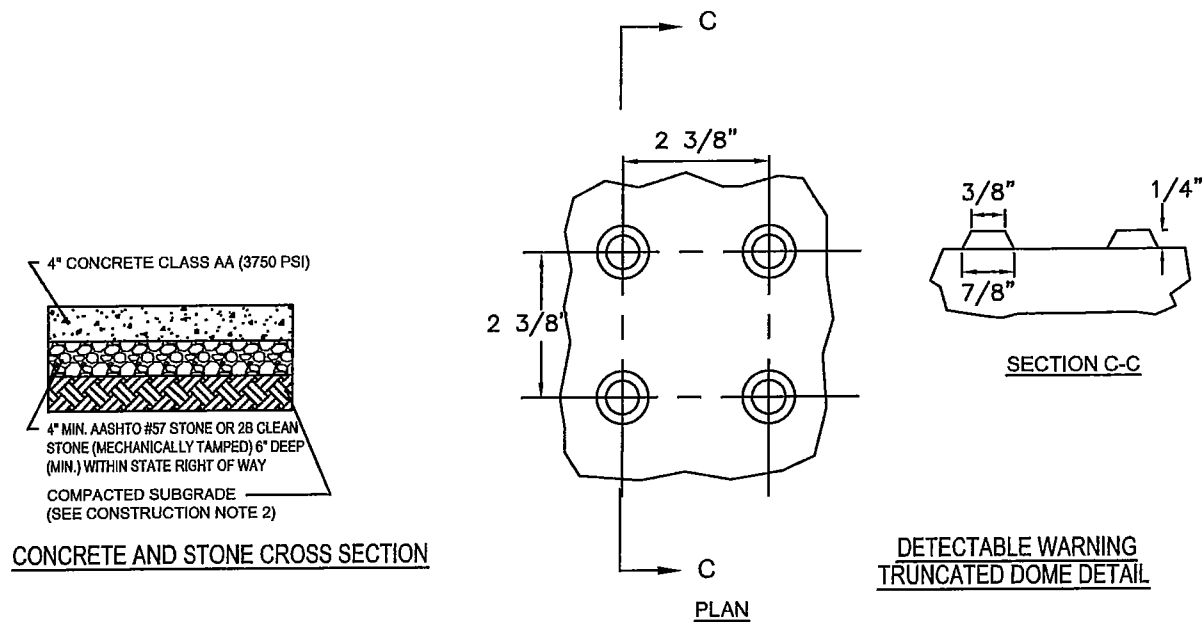
DATE

10-2013

NOT TO SCALE

CC204

# CURB & SIDEWALK RAMPS



- DESIGN NOTES**
1. EACH CURB RAMP REQUIRES AN INDIVIDUAL DESIGN, BY THE DESIGN ENGINEER. EACH INDIVIDUAL RAMP MAY REQUIRE COMPLETED DISTRICT (D6) CS-4401 INSPECTION FORMS. DESIGN MUST SHOW ALL ELEVATIONS, SLOPES ETC. AND MUST COMPLY WITH PENNDOTS ADA REFERENCE GUIDE (DISTRICT 6) AND PENNDOT RC 67m CURRENT EDITION. REFER TO CONSTRUCTION NOTES FOR CONSTRUCTION REQUIREMENTS.
  2. REFER TO PENNDOT RC 67m CURRENT EDITION FOR TYPES OF RAMPS.

- CONSTRUCTION NOTES:**
1. PROVIDE MATERIALS AND CONSTRUCTION IN ACCORDANCE WITH THE REQUIREMENTS OF PENNDOT PUBLICATION 408, CURRENT EDITION, AND AS MODIFIED HEREIN.
  2. SUBGRADE MUST BE APPROVED BY THE TOWNSHIP ENGINEER OR THE TOWNSHIP ENGINEERS REPRESENTATIVE IN THE FIELD PRIOR TO INSTALLING STONE.
  3. CONCRETE SHALL BE 4" THICK (MIN.) CLASS AA (3750 PSI), AIR ENTRAINED (6%) WITH A 4" SLUMP (MAX).
  4. TRANSVERSE CONTROL JOINTS 1/8" WIDE AND 1" DEEP AT THE DISCRETION OF TOWNSHIP ENGINEER OR HIS/HER REPRESENTATIVE IN FIELD.
  5. CONCRETE TO BE PLACED ON A 4"(MIN.) LAYER OF AASHTO #57 STONE OR 2B CLEAN STONE (6" MIN. LAYER WITHIN STATE RW).
  6. ALL EDGES TO BE ROUNDED WITH A 1/4" TOOL.
  7. FINISH CEMENT CONCRETE RAMP WITH COARSE BROOMED TEXTURE TRANSVERSE TO THE SLOPE OF CURB RAMP.
  8. WEATHER PROTECTION SHALL BE USED IN ACCORDANCE WITH PENNDOT PUBLICATION 408 CURRENT EDITION.
  9. PENETRATING SEALER TO BE APPLIED IMMEDIATELY FOLLOWING FINISHING OPERATIONS. PENETRATING SEALER TO BE AQUORON CPT2000 OR APPROVED EQUAL.
  10. ALIGN DETECTABLE WARNING DOMES ON A SQUARE GRID IN THE PREDOMINANT DIRECTION OF TRAVEL TO PERMIT WHEELS TO ROLL BETWEEN DOMES.
  11. PROVIDE "CAST IN PLACE TRUNCATED DOME DETECTABLE WARNING SYSTEM" AS MANUFACTURED BY ADA SOLUTIONS, INC. OR APPROVED EQUAL. COLOR: BRICK RED.

## UPPER DUBLIN TOWNSHIP STANDARD DETAIL CURB AND SIDEWALK RAMPS



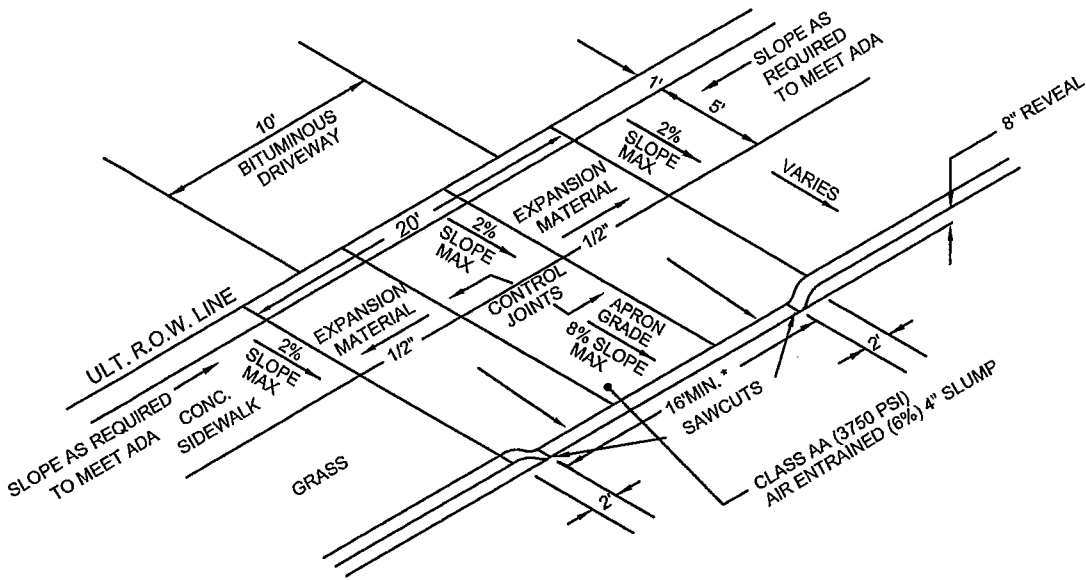
DATE

10-2013

NOT TO SCALE

CC201

**CONCRETE DRIVEWAY APRON**



**DESIGN NOTES**

1. EACH APRON REQUIRES AN INDIVIDUAL DESIGN, BY THE DESIGN ENGINEER. EACH INDIVIDUAL APRON DESIGN MUST SHOW ALL ELEVATIONS, SLOPES ETC. AND MUST COMPLY WITH THE DRIVEWAY DETAILS SECTION OF PENNDOTS ADA REFERENCE GUIDE (DISTRICT 6) AND PENNDOT RC 67m CURRENT EDITION. REFER TO CONSTRUCTION NOTES FOR CONSTRUCTION REQUIREMENTS.

2. REFER TO PENNDOT RC 67m CURRENT EDITION FOR TYPES OF DRIVEWAY APRONS.

\* 16' FOR 10' WIDE DRIVEWAYS. FOR WIDER DRIVEWAYS ADD 6' TO DRIVE WIDTH.

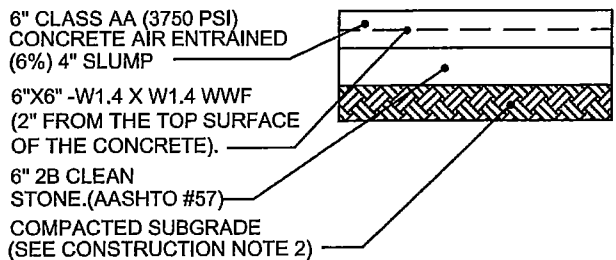
NOTE: CONTROL JOINTS TO BE INSTALLED PER PENNDOT 408 CURRENT EDITION

CONTROL JOINT PLACEMENT TO BE AT THE DISCRETION OF THE TWP. ENGINEER OR THEIR REPRESENTATIVE IN THE FIELD.

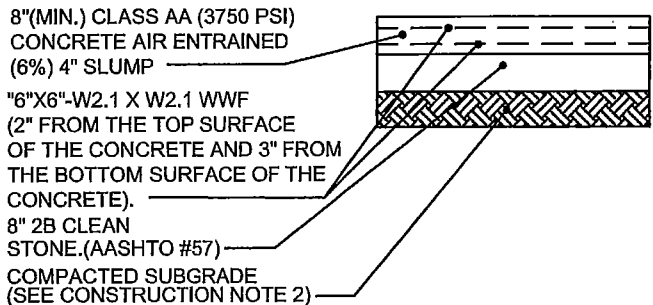
**CONSTRUCTION NOTES:**

1. PROVIDE MATERIALS AND CONSTRUCTION IN ACCORDANCE WITH PENNDOT PUBLICATION 408, CURRENT EDITION AND AS MODIFIED HEREIN.
2. SUBGRADE MUST BE APPROVED BY THE TOWNSHIP ENGINEER OR THE TOWNSHIP ENGINEERS REPRESENTATIVE IN THE FIELD PRIOR TO INSTALLING STONE.
3. WEATHER PROTECTION SHALL BE USED IN ACCORDANCE WITH PENNDOT PUBLICATION 408, CURRENT EDITION.
4. PENETRATING SEALER TO BE APPLIED IMMEDIATELY FOLLOWING FINISHING OPERATIONS. PENETRATING SEALER TO BE AQURON CPT2000 OR APPROVED EQUAL.

**RESIDENTIAL**



**COMMERCIAL OR INDUSTRIAL**



**UPPER DUBLIN TOWNSHIP STANDARD DETAIL  
CONCRETE DRIVEWAY APRON**



DATE

10-2013

NOT TO SCALE

CC202

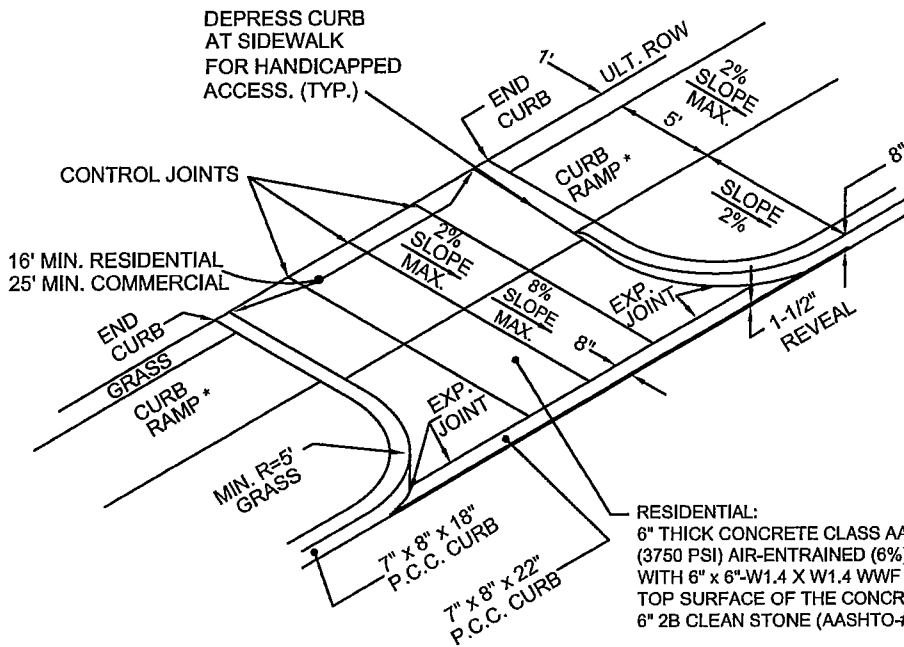
# CONCRETE DRIVEWAY RAMP

## \*CURB RAMP DESIGN NOTES

1. EACH CURB RAMP REQUIRES AN INDIVIDUAL DESIGN, BY THE DESIGN ENGINEER. EACH INDIVIDUAL RAMP MAY REQUIRE COMPLETED DISTRICT 6 (D6) CS-4401 INSPECTION FORMS. DESIGN MUST SHOW ALL ELEVATIONS, SLOPES ETC. AND MUST COMPLY WITH PENNDOTS ADA REFERENCE GUIDE (DISTRICT 6) AND PENNDOT RC 67m CURRENT EDITION. REFER TO CONSTRUCTION NOTES FOR REQUIREMENTS.
2. REFER TO PENNDOT RC 67m CURRENT EDITION FOR TYPES OF RAMPS.

## DRIVEWAY APRON DESIGN NOTES

1. EACH APRON REQUIRES AN INDIVIDUAL DESIGN, BY THE DESIGN ENGINEER. EACH INDIVIDUAL APRON DESIGN MUST SHOW ALL ELEVATIONS, SLOPES ETC. AND MUST COMPLY WITH THE DRIVEWAY DETAILS SECTION OF PENNDOTS ADA REFERENCE GUIDE (DISTRICT 6) AND PENNDOT RC 67m CURRENT EDITION. REFER TO CONSTRUCTION NOTES FOR CONSTRUCTION REQUIREMENTS.
2. REFER TO PENNDOT RC 67m CURRENT EDITION FOR TYPES OF DRIVEWAY APRONS.



RESIDENTIAL:  
6" THICK CONCRETE CLASS AA (3750 PSI) AIR-ENTRAINED (6%), 4" SLUMP) WITH 6" x 6"-W1.4 X W1.4 WWF 2" FROM THE TOP SURFACE OF THE CONCRETE ON 6" 2B CLEAN STONE (AASHTO-#57)

COMMERCIAL OR INDUSTRIAL:  
8"(MIN.) THICK CONCRETE CLASS AA (3750 PSI) AIR ENTRAINED (6%) 4" SLUMP WITH 6"x6"-W2.1 X W2.1 WWF. 2" FROM THE TOP SURFACE OF THE CONCRETE AND 3" FROM THE BOTTOM SURFACE OF THE CONCRETE ON 8" 2B CLEAN STONE (AASHTO #57).

## CONSTRUCTION NOTES:

1. PROVIDE MATERIALS AND CONSTRUCTION IN ACCORDANCE WITH THE REQUIREMENTS OF PENNDOT PUBLICATION 408, CURRENT EDITION, AND AS MODIFIED HEREIN.
2. SUBGRADE MUST BE APPROVED BY THE TOWNSHIP ENGINEER OR THE TOWNSHIP ENGINEERS REPRESENTATIVE IN THE FIELD PRIOR TO INSTALLING STONE.
3. WEATHER PROTECTION SHALL BE USED IN ACCORDANCE WITH PENNDOT PUBLICATION 408, CURRENT EDITION.
4. PENETRATING SEALER TO BE APPLIED IMMEDIATELY FOLLOWING FINISHING OPERATIONS. PENETRATING SEALER TO BE AQUORON CPT2000 OR APPROVED EQUAL.

## UPPER DUBLIN TOWNSHIP STANDARD DETAIL CONCRETE DRIVEWAY RAMP WITH CURBED RADIUS RETURNS



DATE

10-2013

NOT TO SCALE

CC203